



www.essendon.herts.sch.uk
01707 261209
admin@essendon.herts.sch.uk

Friday 19th January 2024

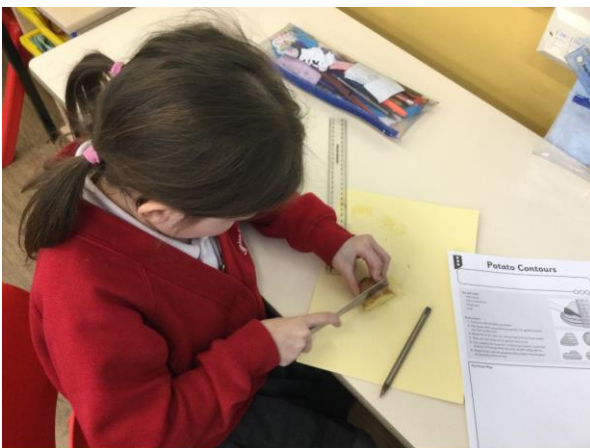
Our Value This Half Term: Love Others

Dear Essendon Families,

Love Others

This half term our Value is Love Others. This is probably one of the most important Values we have as a school community. The Bible says "Do unto others as you would have them do unto you" this is a very good rule to live our lives by. Jesus taught us that loving one another, even people we don't get along with, is really important. One way we can show this in our everyday lives is to treat others how we want to be treated. It's clear, it's simple and it makes sense for successful teamwork.

Contour Lines



To explore contour lines in geography practically, the children in Harefield cut a potato 'mountain' into slices and drew around each layer to make a 2D representation.

Winter Warmer



Making bread at After School Club, delicious!

What Is The Big Garden Birdwatch?

The Big Garden Birdwatch is the world's largest garden wildlife survey. Every year, hundreds of thousands of nature lovers take part, helping to build a picture of how garden birds are faring. How to take part?

- Get your free guide and stock up on supplies, with 15% off and free delivery on food and feeders at the RSPB shop.
- Spend an hour watching the birds in your patch, between 26 and 28 January, and record the birds that land.
- Tell the RSPB what you saw (even if that's nothing at all)! You can submit your results online or by post.



<https://www.rspb.org.uk/whats-happening/big-garden-birdwatch/faqs>

Dates For Your Diary

24th January for 6 days – our Woodland Area is being refenced so please stay out of the woods.

5th to 9th Feb – Feel Good Week

Tues 6th Feb – Safer Internet Day

Tues 13th February – Shrove Tuesday/Lent

19th Feb to 23rd Feb – Half Term

Tues 19th March Parent/Teacher Consultations

Thurs 21st March Parent/Teacher Consultations

Tue 26th March, 2:15pm – Easter Service at the Church, all welcome.

Thurs 28th March – End of Term



And Finally ...

Keep warm this weekend, get prepared for the wind and rain next week, make sure everyone has coats and outdoor shoes in school so we can all get outside for playtime and enjoy whatever the weather brings next!

Have a great weekend from Ms Canham

Your Weekend Times Table Challenge

Name: _____

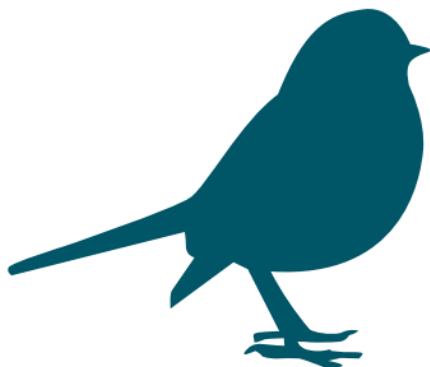
8 TIMES TABLE QUICK QUIZ

8x6= _____	8x8= _____	8x3= _____
9x8= _____	5x8= _____	7x8= _____
3x8= _____	8x4= _____	0x8= _____
4x8= _____	8x1= _____	8x8= _____
1x8= _____	2x8= _____	5x8= _____
5x8= _____	8x10= _____	8x2= _____
8x8= _____	8x0= _____	8x9= _____
8x7= _____	10x8= _____	3x8= _____

Date _____ Score _____



Your how-to-guide and tally chart



**Big Garden
Birdwatch**

26–28 January 2024

Taking part is as easy as 1, 2, 3

- 1** Count the birds you see in your garden, from your balcony or in your local park for one hour between 26 and 28 January 2024.

Use the tally boxes on the next page to count and record the birds you spot. Transfer your count to the results form. This chart shows some birds you might see. You may see others, if so record those on the results form too. Where we don't show male and female birds, the sexes look similar, but are not always identical.
- 2** Following these simple rules makes it easy to count the birds you see.

Only include birds that land, not those flying over. Count the highest number of each species you see at any one time, otherwise you could count the same bird twice. For example, if you saw a group of eight Starlings but then towards the end of your hour you saw six together, record '8' as your final Starling count.
- 3** Go online and tell us what you saw at www.rspb.org.uk/birdwatch

Submitting online is quick and easy and it means we can spend more on saving nature as it reduces our costs. Whatever you saw – even if nothing at all – please tell us. The more results we have, the better the picture we will be of how garden birds are faring.

If you are unable to submit your results online, please complete and send us the print-from-home form.

Helping you make your Big Garden Birdwatch count

Get involved on our social channels

Throughout the Big Garden Birdwatch long weekend, you can join in the conversation on our social channels. See what other nature lovers are spotting across the UK and you can upload pics and comments about your Birdwatch. Go to [#BigGardenBirdWatch](https://twitter.com/BigGardenBirdWatch)

Get ID tips and expert advice

You'll find lots of advice on identifying birds by sight and sound, as well as expert insights into garden wildlife at www.rspb.org.uk/birdwatch

The RSPB is a registered charity in England and Wales 207076, in Scotland SC037654. Illustrations by Mike Langman (rspb-images.com) 356-23-24 BCBW-24

THEATRE TRAIN DANCE ACT SING
Half - term workshop



Toy Story

Wednesday 21st February - 9:30-11:30am
Ages 4-6 years

Stanborough School, WGC
£15 pp

Childcare Choices
WE NOW OFFER TAX-FREE CHILDCARE!

THEATRE TRAIN DANCE ACT SING
Half-term workshop

Wednesday 21st February
9-3:30pm

Stanborough School, WGC

Ages 5 (Y1) plus

£28 pp early bird booking by end of Jan
£30 pp thereafter
Sibling discounts



Wonka

CHARLIE
AND THE CHOCOLATE FACTORY
The New Musical

welwyn@theatretrein.co.uk

07747 608 180

Direct sign up:

<https://theatretreinwelwyn.membermeister.com/register>



THEATRE TRAIN DANCE ACT SING

OUTSTANDING PERFORMING ARTS CLASSES FOR 3 - 18 YEAR OLDS

Find us at Stanborough School, Lemsford Lane,
Welwyn Garden City, AL8 6YR

Saturday classes:

- Tinies for 3 year olds - £8 per week
12-12:45pm
- Minis for 4-5 year olds - £13 per week
9-10:30am, 10:30-12pm, 1-2:30pm
- Main Company for 6-18 year olds - £24 per week
9:15-12:15pm, 12:45-3:45pm
Sibling discounts available

BELIEVE **ACHIEVE** **EXCEED**
in yourself your dreams expectations



FREE
Book a taster
session today



Essendon C of E (VC) Primary School

Term Dates: 2023/2024

Autumn Term - 2023

Friday 1st September – **INSET Day** – staff only

Monday 4th September – Start of term for pupils – 8:40am doors open, doors close at 8:50am

Monday 23rd October to Friday 27th October – Half Term

Wednesday 20th December – End of Term - 1:15pm

Spring Term - 2024

Thursday 4th January – **Occasional Day** – School Closed

Friday 5th January – **INSET Day** – staff only

Monday 8th January – Start of term for pupils

Monday 19th to Friday 23rd February - Half Term

Thursday 28th March - End of Term – 1:15pm

Summer Term - 2024

Monday 15th April – **INSET Day** – staff only

Tuesday 16th April – Start of term for pupils

Monday 6th May – Bank Holiday

Monday 27th to Friday 31st May – Half Term

Thursday 11th July – Year 6 Secondary School Transition Day

Friday 19th July – End of term - 1:15pm

Monday 22nd and Tuesday 23rd July – **INSET Days** – staff only